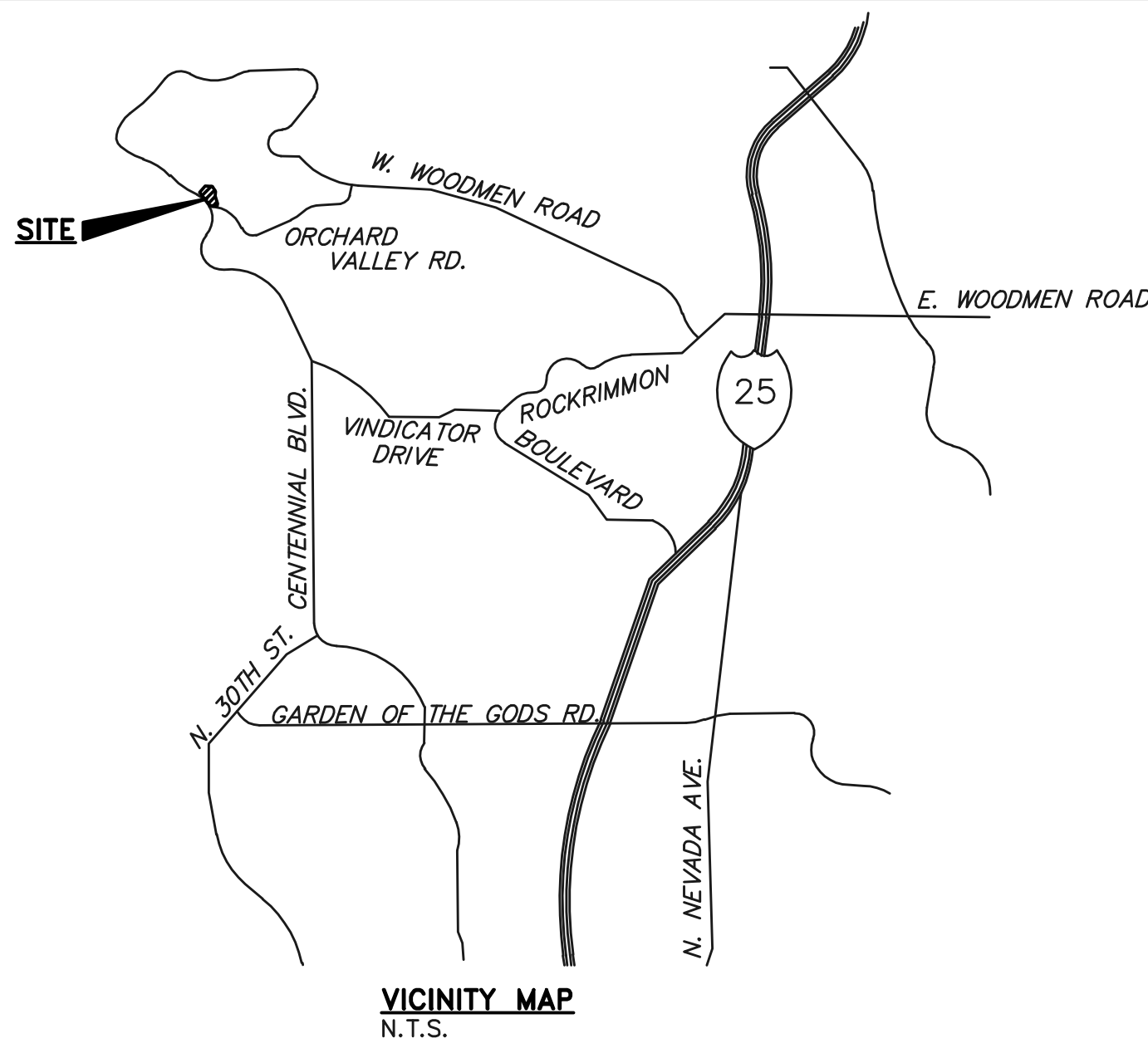


# CENTENNIAL GLEN FILING NO. 3

CITY OF COLORADO SPRINGS, COUNTY OF EL PASO, STATE OF COLORADO

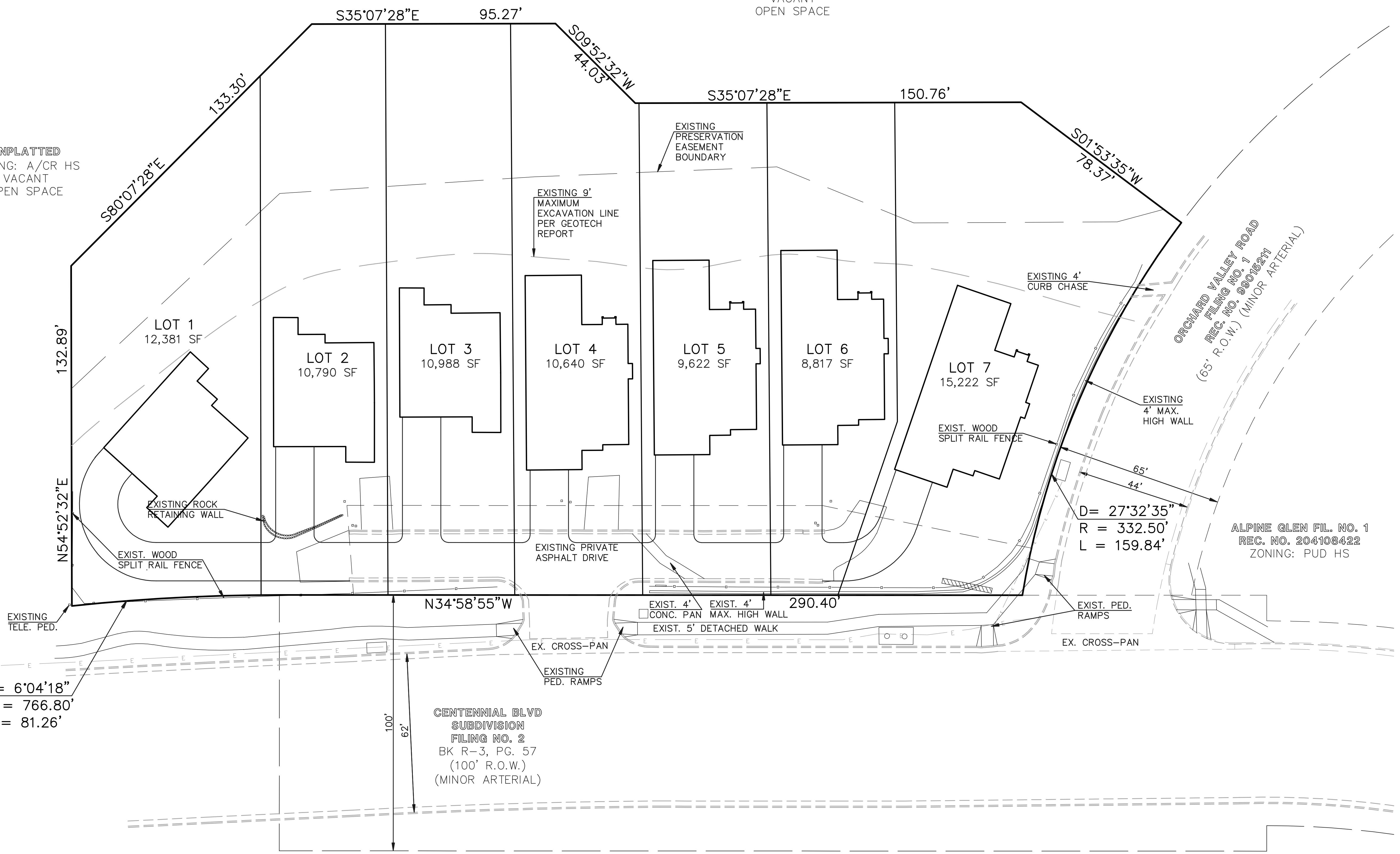
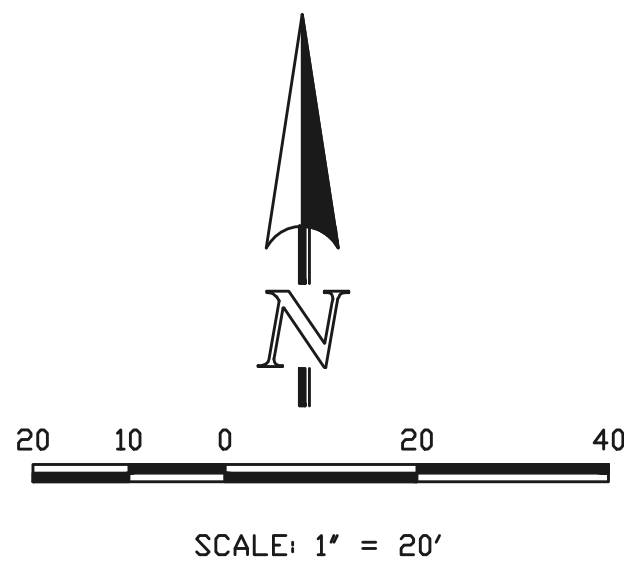
## MARKETING MAP

APRIL 2010



UNPLATTED  
ZONING: A/CR HS  
VACANT  
OPEN SPACE

UNPLATTED  
ZONING: A/CR HS  
VACANT  
OPEN SPACE



UNPLATTED  
BK, 5430, PG. 1112  
ZONING: A HS

**CLASSIC**  
CONSULTING  
ENGINEERS & SURVEYORS

6385 Corporate Drive, Suite 101  
Colorado Springs, Colorado 80919

(719)785-0790  
(719)785-0799 (Fax)

CENTENNIAL GLEN FILING NO. 3			
MARKETING MAP			
DESIGNED BY	KRC	SCALE	DATE
DRAWN BY	JWP	(H) 1" = 20'	SHEET 1 OF 1
CHECKED BY	(V) 1" = N/A	JOB NO.	2297.00
			2-16-10

